



Regional Emergency Planning Support for Emergency Managers

Dr. Laura Myers

Ms. Ashley Loftin

Mississippi State University
Social Science Research Center



Regional Emergency Planning

- Regional Emergency Planning Model (REPM) for emergency planning and decision making.
- Enhance and support regional planning collaboration...
 - between emergency planners and responders
 - from multiple jurisdictions and with different missions.
- Essential for...
 - the management of limited response resources and
 - responding to large-scale disasters that overwhelm local resources.





Homeland Security Critical Infrastructure Protection

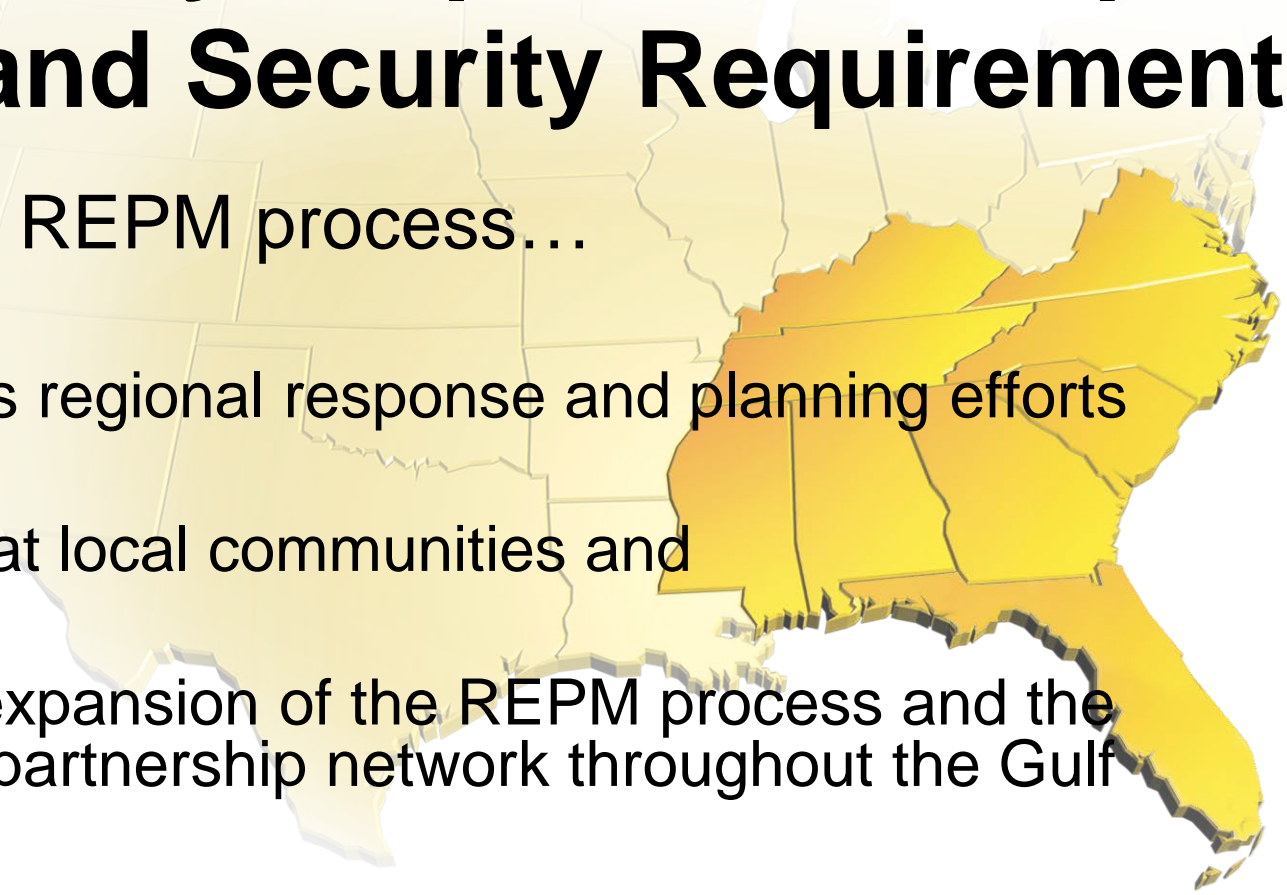
- A regional partnership development process will result in a better and more resourced response that will permit better management of residents, tourists, and local businesses during and after disaster events.





Capability Requirement Gap: Homeland Security Requirement

- Use of the REPM process...
 - enhances regional response and planning efforts
 - directed at local communities and
 - permits expansion of the REPM process and the regional partnership network throughout the Gulf Coast.



Partnerships Are Key to Emergency Management

- Los Angeles County
- Sustaining partnerships is critical
- Private sector in EOC
- Social media
- Emergency Survival Guide-preparedness information for constituents-emergency plans and escape routes
- <http://www.emergencymgmt.com/disaster/Partnerships-Are-the-Key-to-Emergency-Management.html?elq=7b6f643e272448579d8784e952d0c047>

Capability Requirement Gap: Homeland Security Requirement

- Creates a broader range of partnerships...
 - throughout the Gulf Coast states and
 - an interconnected set of regional networks for local disaster events.



Capability Requirement Gap: Landscape Assessment

- Regionalization and Regional Emergency Planning Networks
- Partnership Development
- Regional Planning Development using the REPM process
 - Charlotte, NC and UASI region
 - I-85 Corridor, NC, SC, GA





Capability Requirement Gap: Landscape Assessment

- Applied Projects using the REPM process
 - Regionalization Conference, 2009, SC
 - State and regional exercise, 2009-10, SC
 - Regional/State VOAD Network, 2008 +, NC/SC
 - Private Sector Resource Database, 2008 +, NC
 - Long term recovery planning, 2008 +, NC/SC



Capability Requirement Gap: Landscape Assessment

- Applied Projects using the REPM process
 - LEPC development, 2008 +, NC, SC
 - Situational Awareness Technology Gap Analysis, 2010, Applied Science Foundation for Homeland Security
 - NYC Regional Catastrophic Planning Project, 2011 +, ASFHS
 - Business Continuity Planning Project, 2011-12



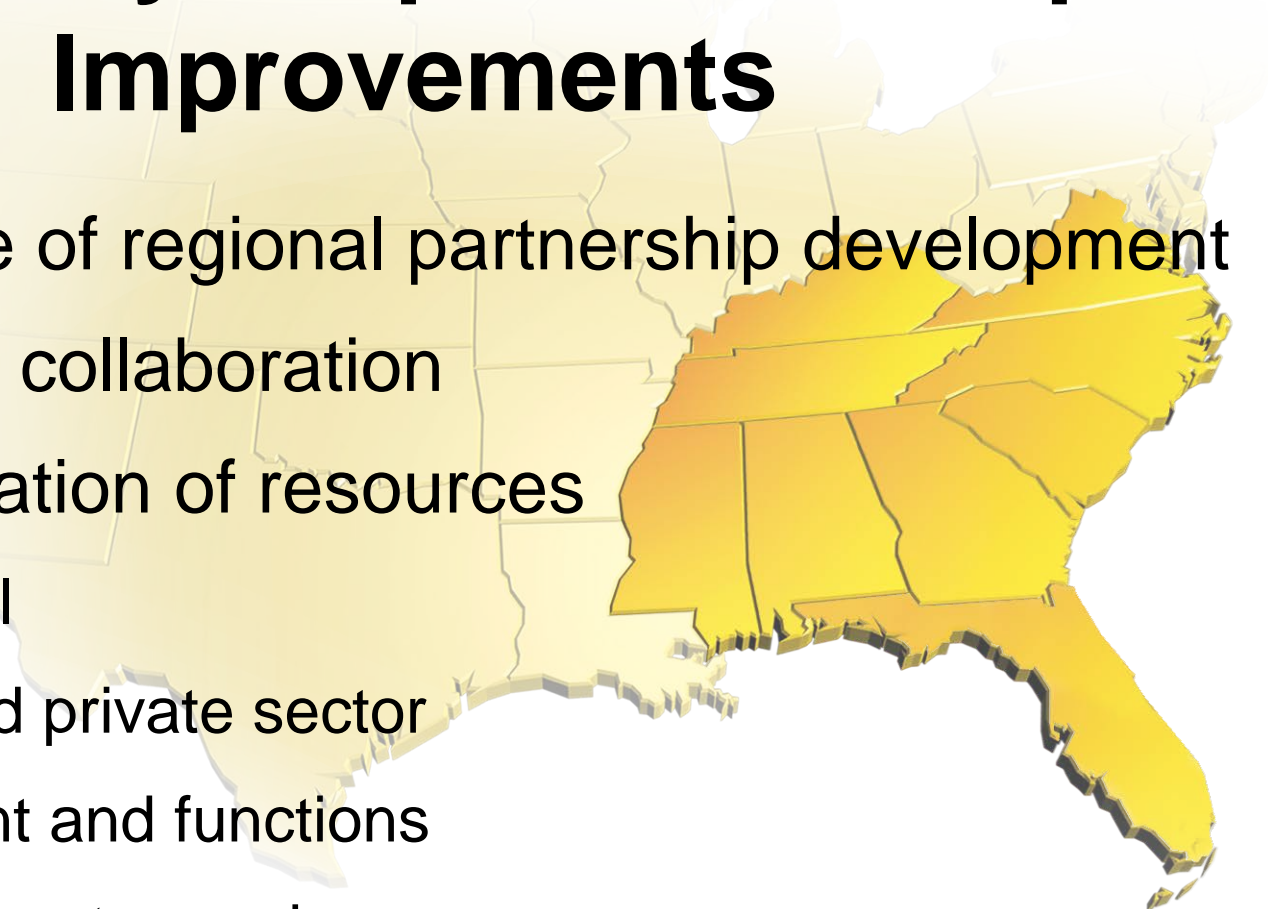
Capability Requirement Gap: Landscape Assessment

- Other Regionalization and Partnership initiatives
 - Resiliency: CARRI
 - Partnership activities and exercises
 - Social services partnerships for long term recovery
 - Special needs population planning
 - Partners in weather preparedness (IWT/NWS)



Capability Requirement Gap: Improvements

- Importance of regional partnership development
- Method for collaboration
- Regionalization of resources
 - Personnel
 - Public and private sector
 - Equipment and functions
 - Applications to needs





Capability Requirement Gap: Improvements

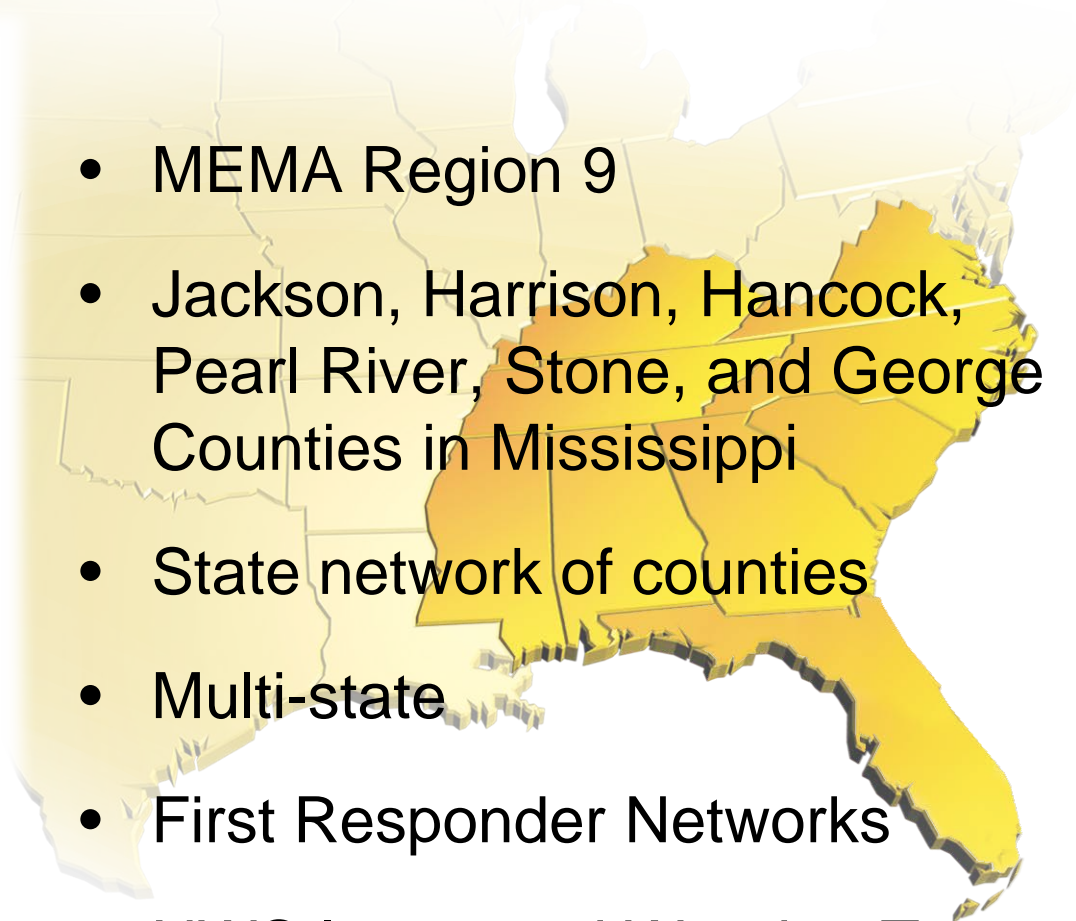
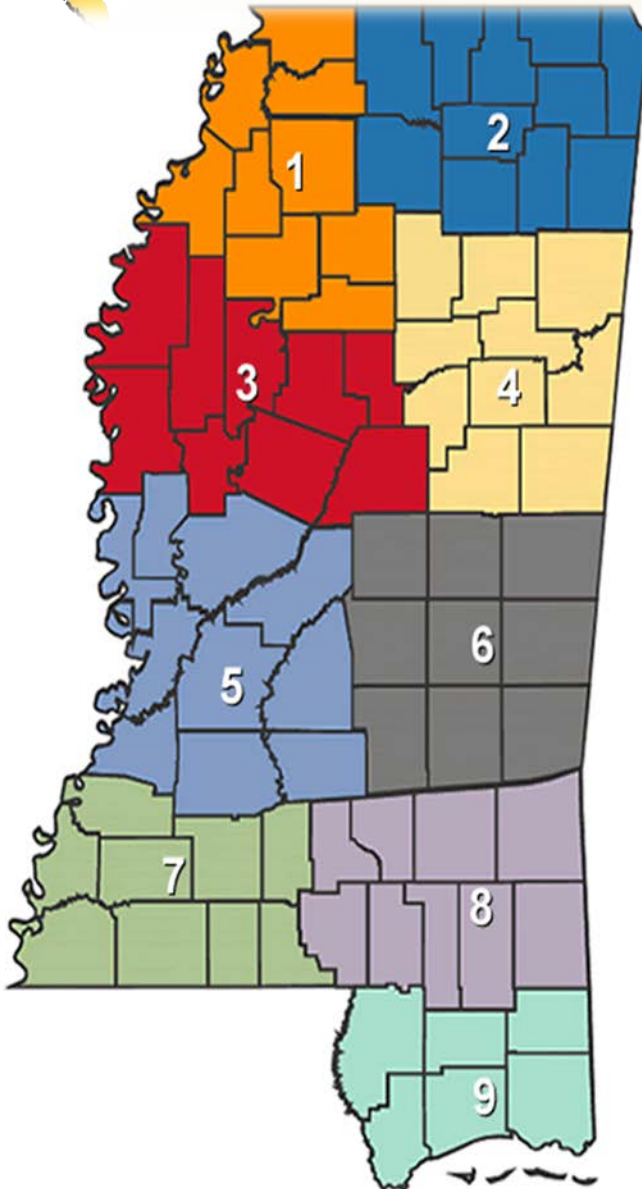
- Less demand on federal resources
- Localized responsibility for planning, preparedness, response, and recovery
- Coordination of partnership planning
- Management of fiscal crisis at local levels

Capability Requirement Gap: Unique Characteristics

- Regionalization concept
- Network partnership development process
- Multi-jurisdictional relationships
- Multi-state relationships
- Resource management
- Local and regional knowledge/expertise
- Goal directed
- Coordination of partnership initiatives



Emergency Planning Networks



- MEMA Region 9
- Jackson, Harrison, Hancock, Pearl River, Stone, and George Counties in Mississippi
- State network of counties
- Multi-state
- First Responder Networks
- NWS Integrated Warning Team

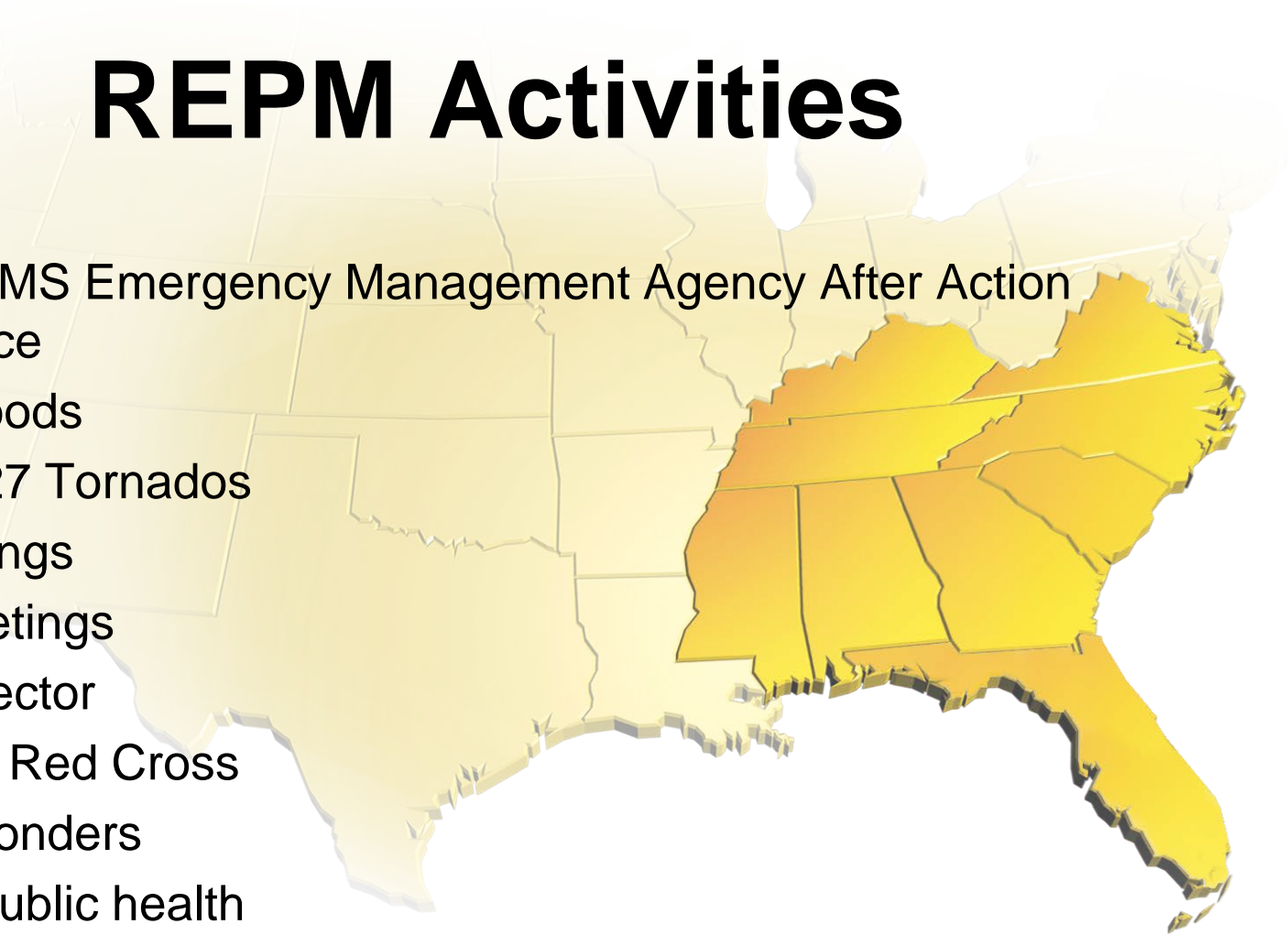
Emergency Planning Networks

- Stakeholders
 - Emergency Managers
 - National Weather Service
 - American Red Cross
 - Mississippi Highway Patrol
 - Private Sector
 - First responders
 - NGOs and faith-based organizations
 - Radio stations and ham radio operators
 - Volunteers



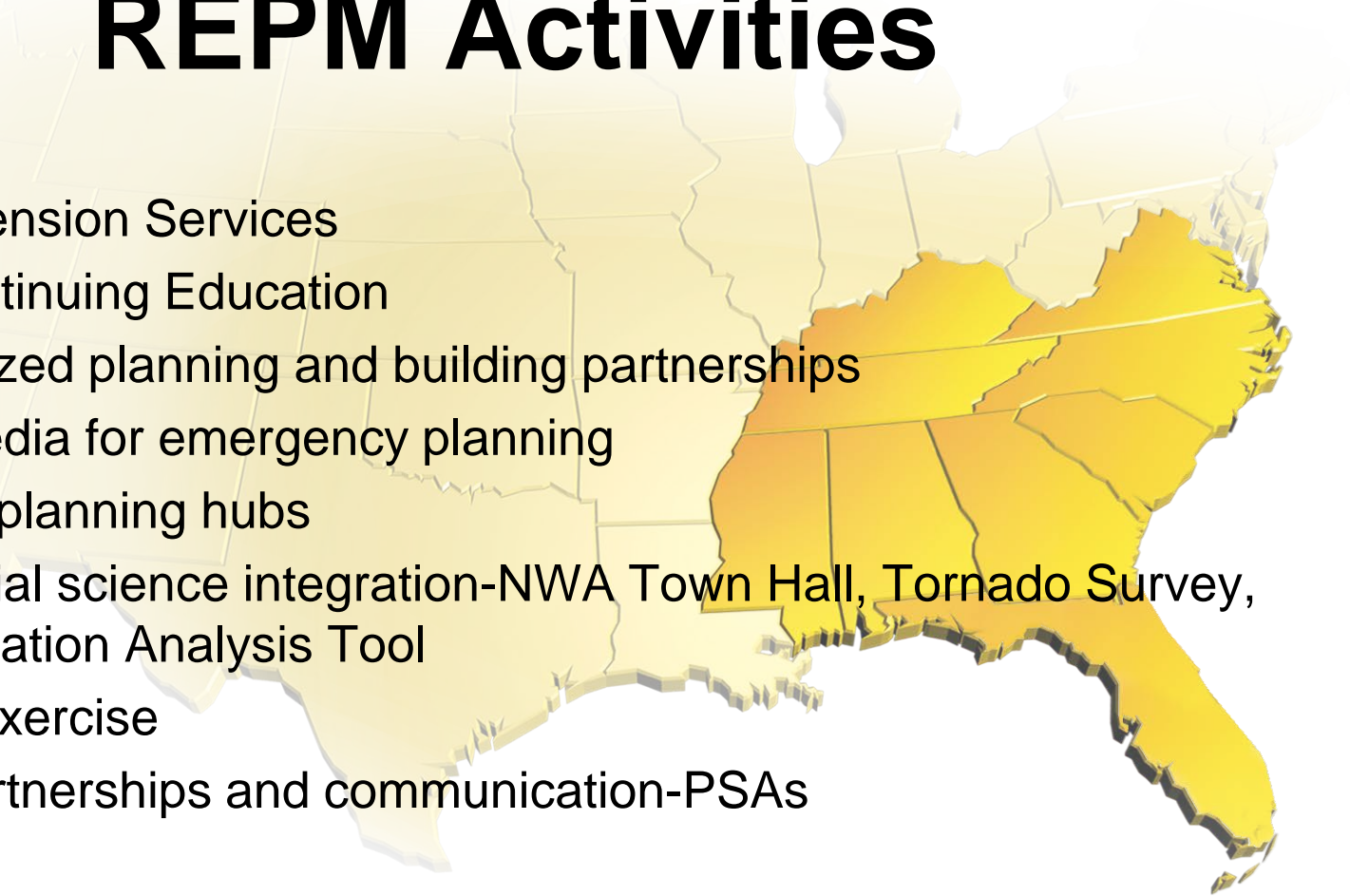
REPM Activities

- Attended MS Emergency Management Agency After Action Conference
 - MS floods
 - April 27 Tornadoes
- EM Meetings
- NWS Meetings
- Private Sector
- American Red Cross
- First responders
- Medical/public health
- LEPC's
- Local government



REPM Activities

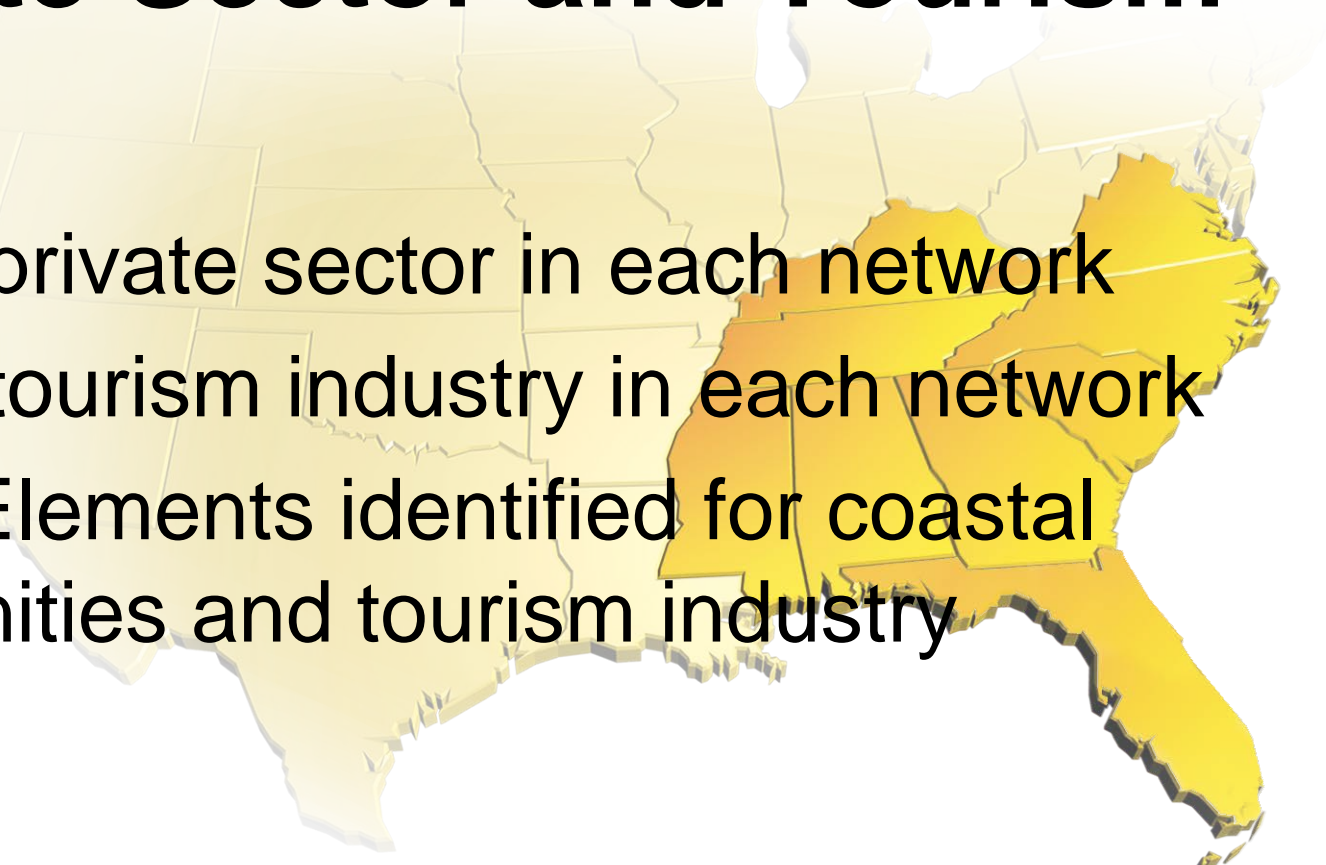
- MSU Extension Services
- MSU Continuing Education
- Regionalized planning and building partnerships
- Social media for emergency planning
- Regional planning hubs
- NWS social science integration-NWA Town Hall, Tornado Survey, EM Population Analysis Tool
- Nuclear exercise
- Media partnerships and communication-PSAs





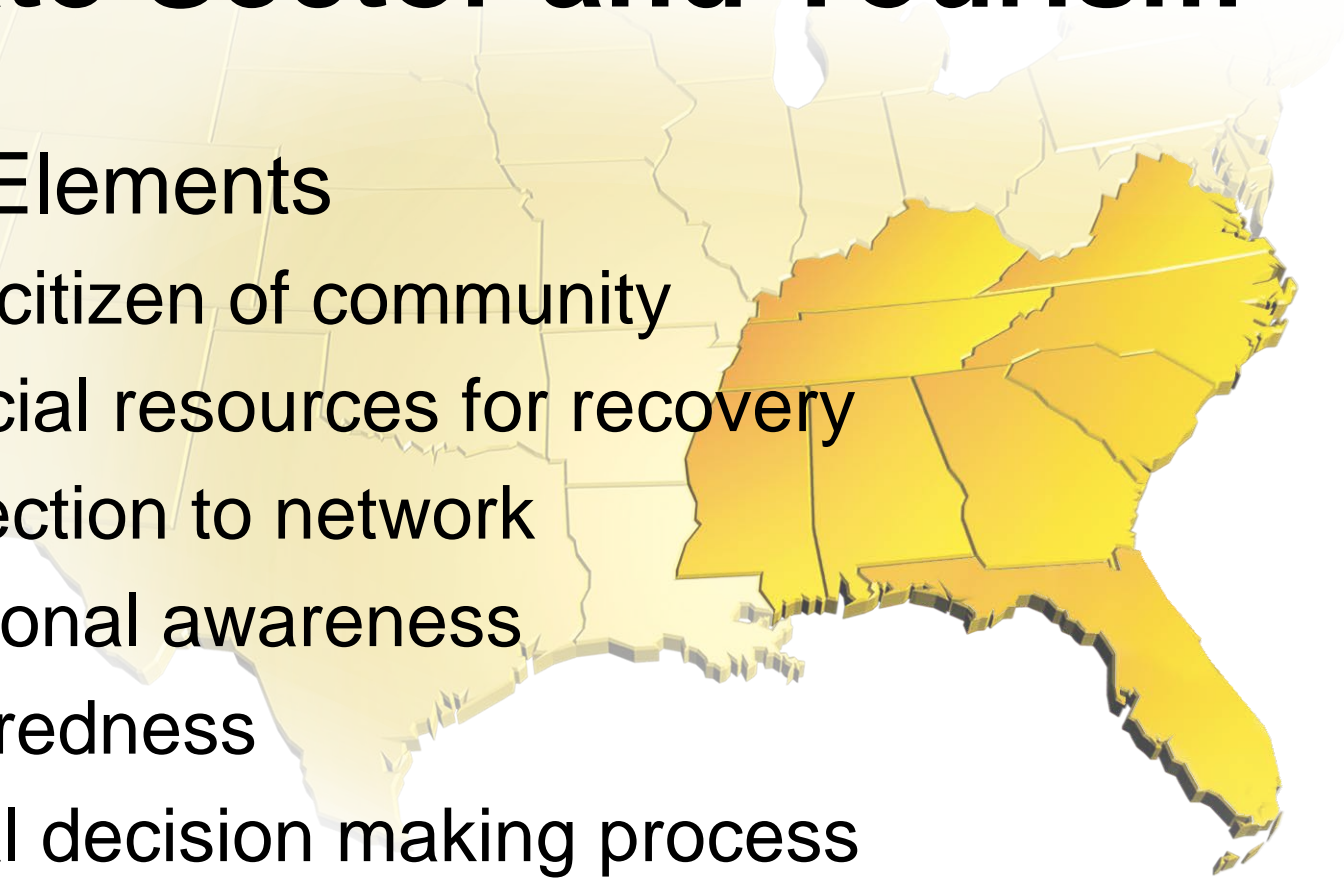
Private Sector and Tourism

- Role of private sector in each network
- Role of tourism industry in each network
- REPM Elements identified for coastal communities and tourism industry



Private Sector and Tourism

- REPM Elements
 - Good citizen of community
 - Financial resources for recovery
 - Connection to network
 - Situational awareness
 - Preparedness
 - Critical decision making process
 - Multi-jurisdictional partnerships within common industries and corporations



Multi-Jurisdictional Partnerships

- Partnerships within common industries and corporations
- Public sector already doing this
- Common goals
- Already know what needs to be done
- Prepare these partnerships and plans in advance

Planning and Decision Making

- Critical decision making process
 - When to pull the trigger...
 - Type 1 or Type 2 decisions
 - Close/Evacuate/Cancel
 - Reopen
 - Connection to network
 - Getting the right information
 - Getting the needed information
 - Financial cost/benefit analysis
 - Human cost/benefit analysis

Disaster Impact and Regional Planning

- **Examples:**
 - Hurricane Camille
 - Hurricane Katrina
 - BP Oil Spill



Hurricane Camille



Hurricane Camille



Hurricane Katrina



Hurricane Katrina



BP Oil Spill



BP Oil Spill



Plans and Exercises

- New plans post Katrina
- Integrated plans
- LEPC meetings
- Regional meetings
- Exercises: Exercise cost-regionalize!
- Local radio:
 - Disaster communication network
 - Public service announcements



Geospatial Planning

- Some use of geospatial products from Katrina response.
- New applications of geospatial products in planning and response efforts.
- REPM process bringing latest technology information to planning and to planners, especially planners not previously aware of such technology.

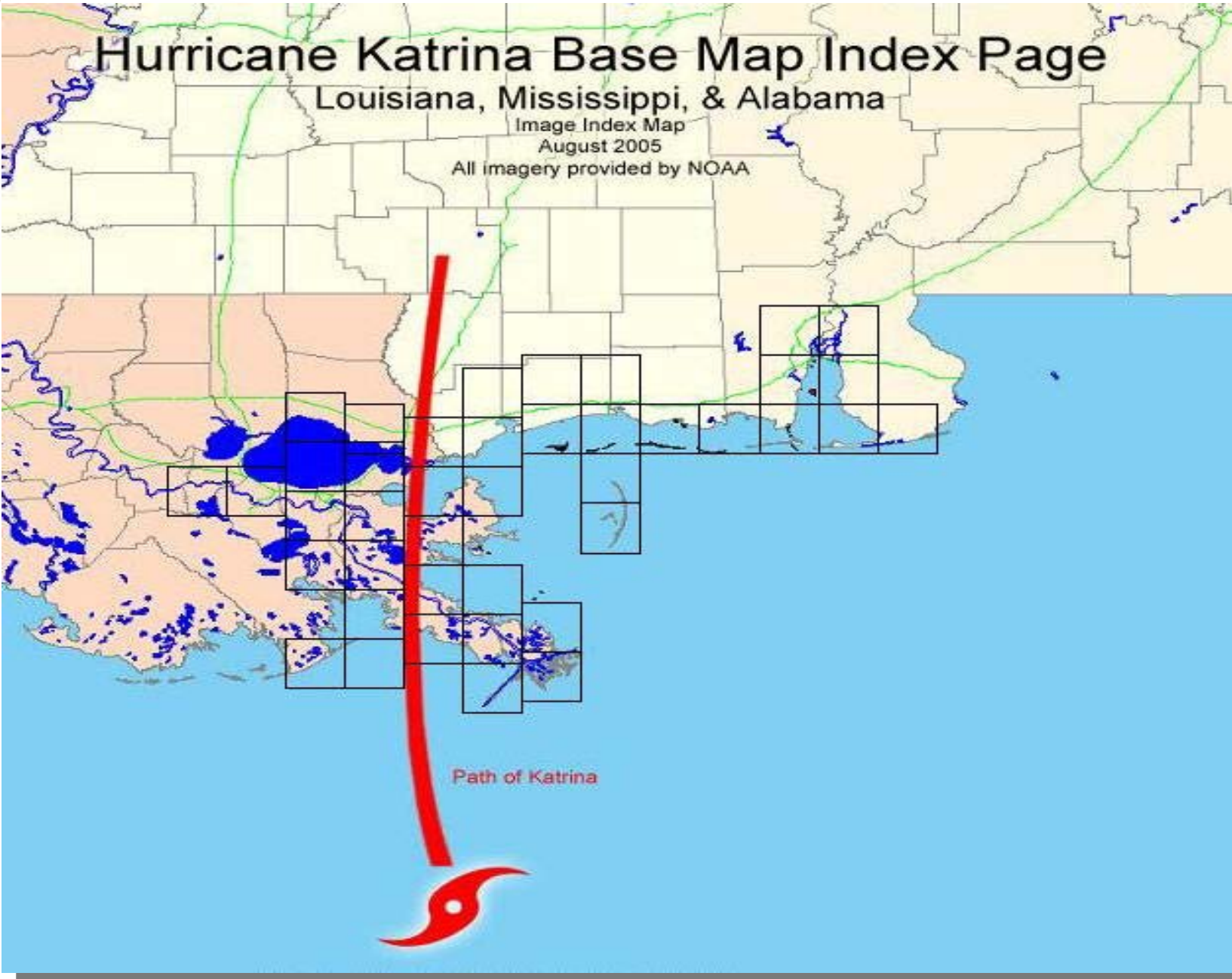


Hurricane Katrina Base Map Index Page

Louisiana, Mississippi, & Alabama

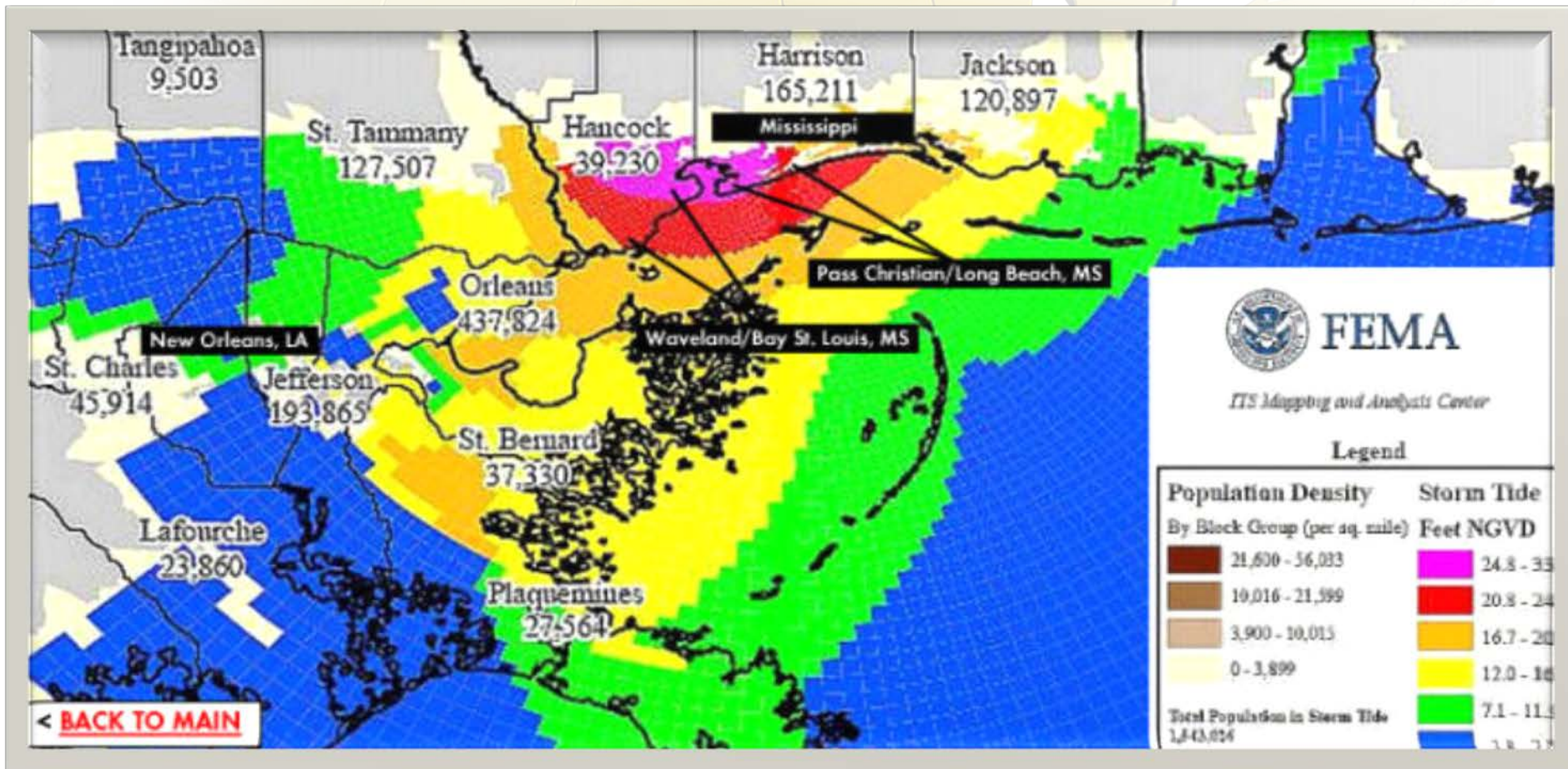
Image Index Map
August 2005

All imagery provided by NOAA



Path of Katrina

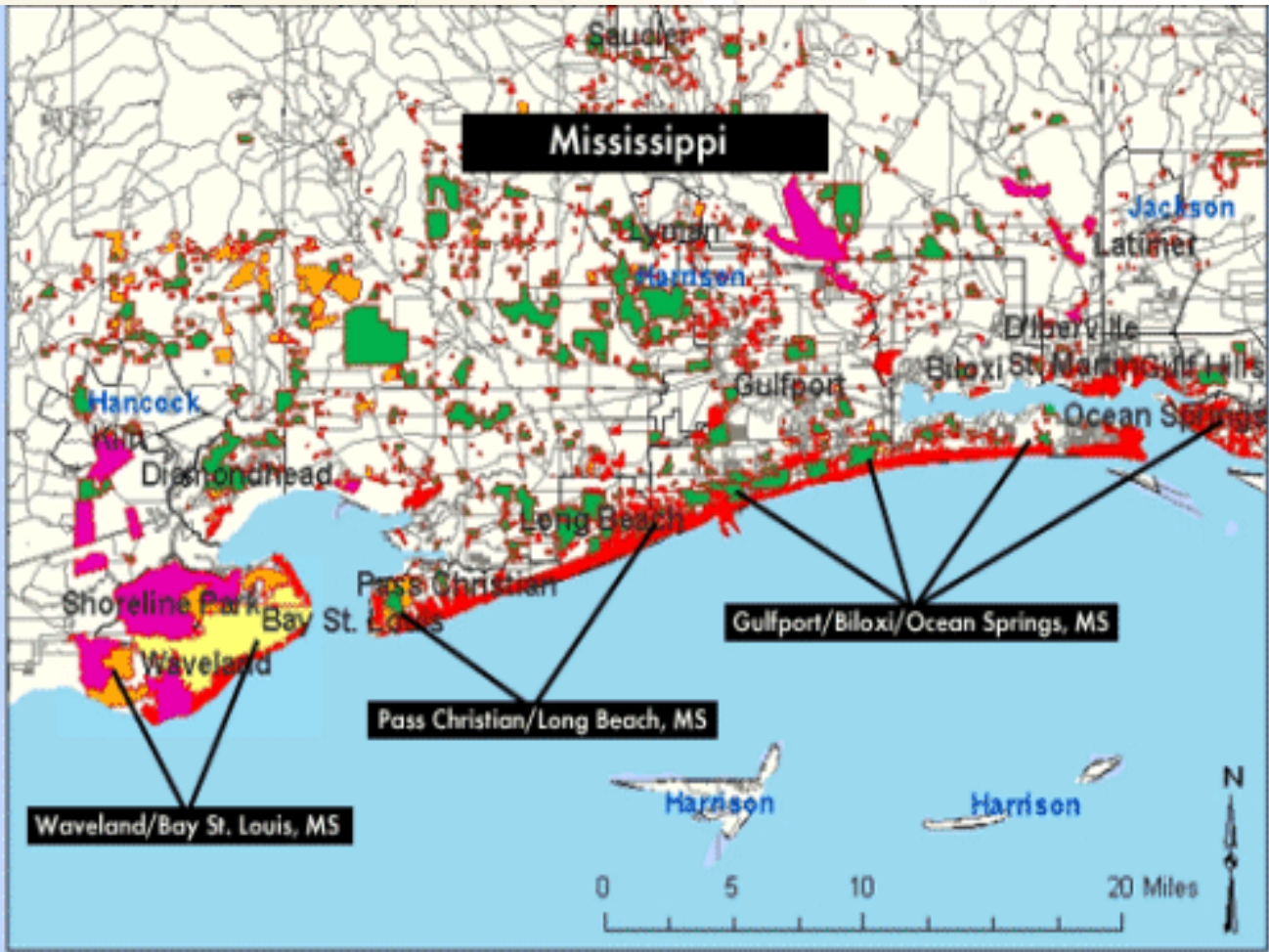
Storm Tide Map





Damage Assessment Map

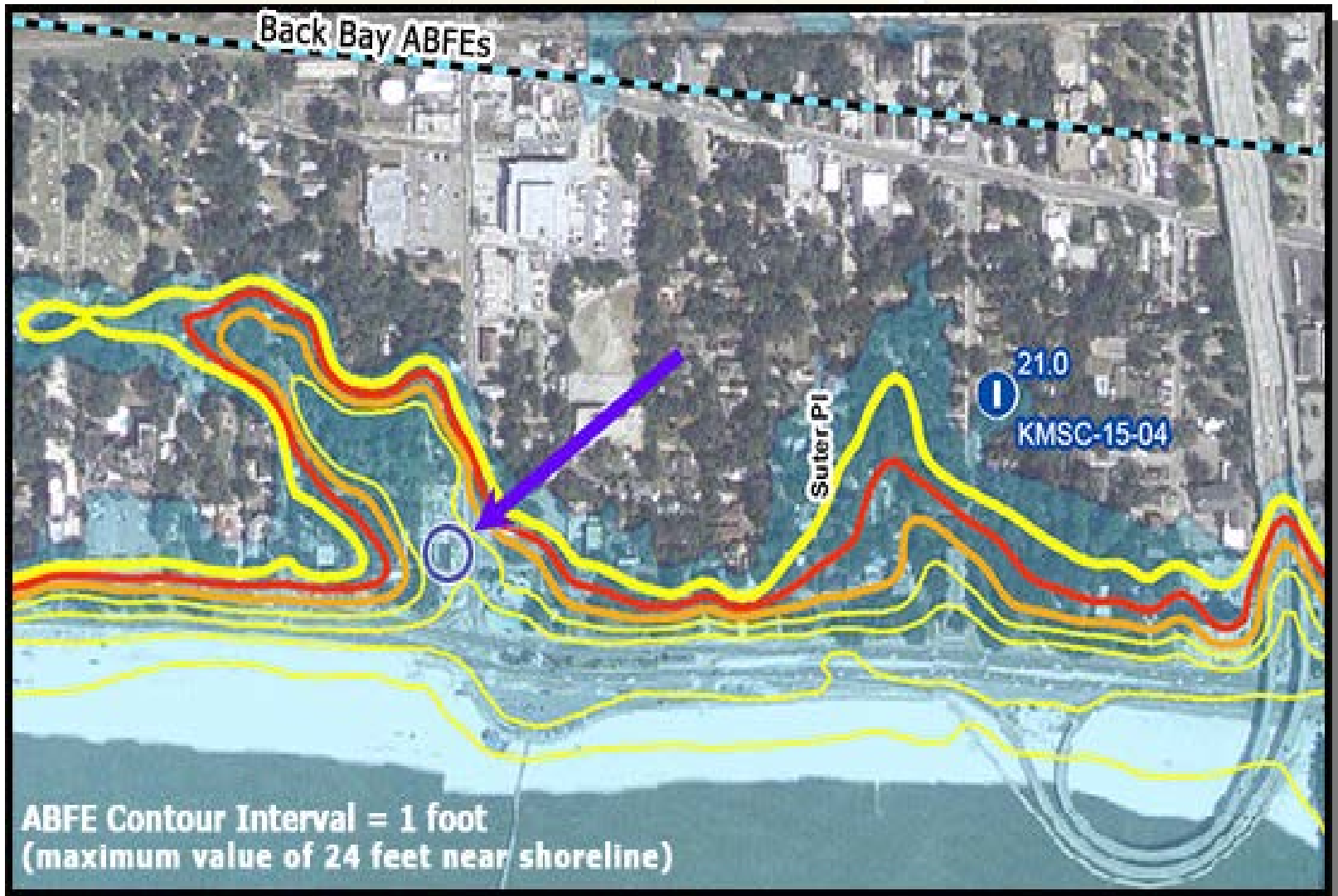
FEMA Damage Assessment of the Central Mississippi Gulf Coast



- Katrina Damage**
- katrina Damage (source: FEMA 10-sep-05)
 - Damage Level (source: FEMA 10-sep-05)
 - CATASTROPHIC
 - EXTENSIVE
 - LIMITED
 - FLOOD
 - MODERATE
 - SATURATION

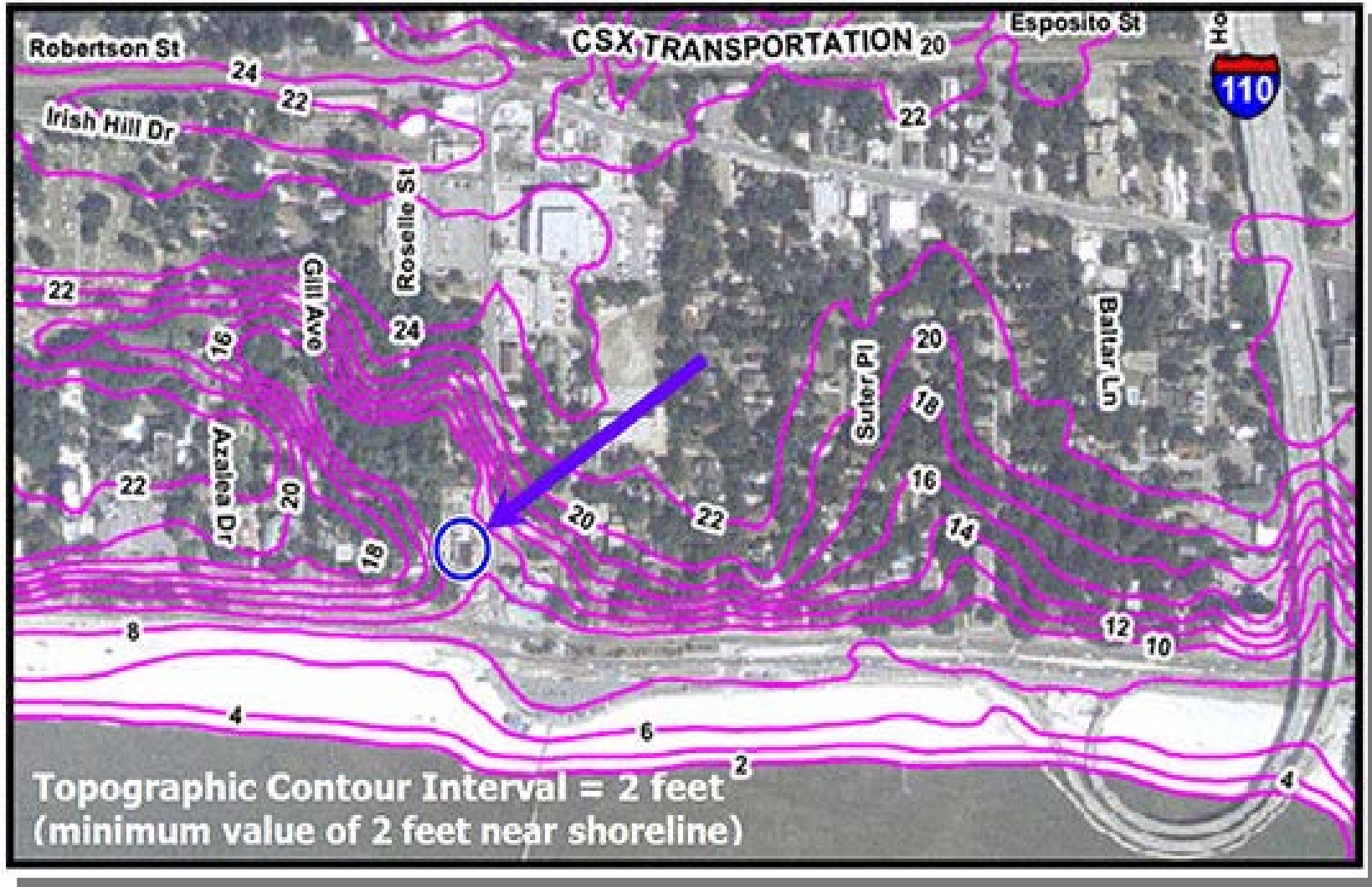
[< BACK TO MAIN](#)

Recovery Map for Biloxi



ABFE Contour Interval = 1 foot
(maximum value of 24 feet near shoreline)

Biloxi Topographic Map



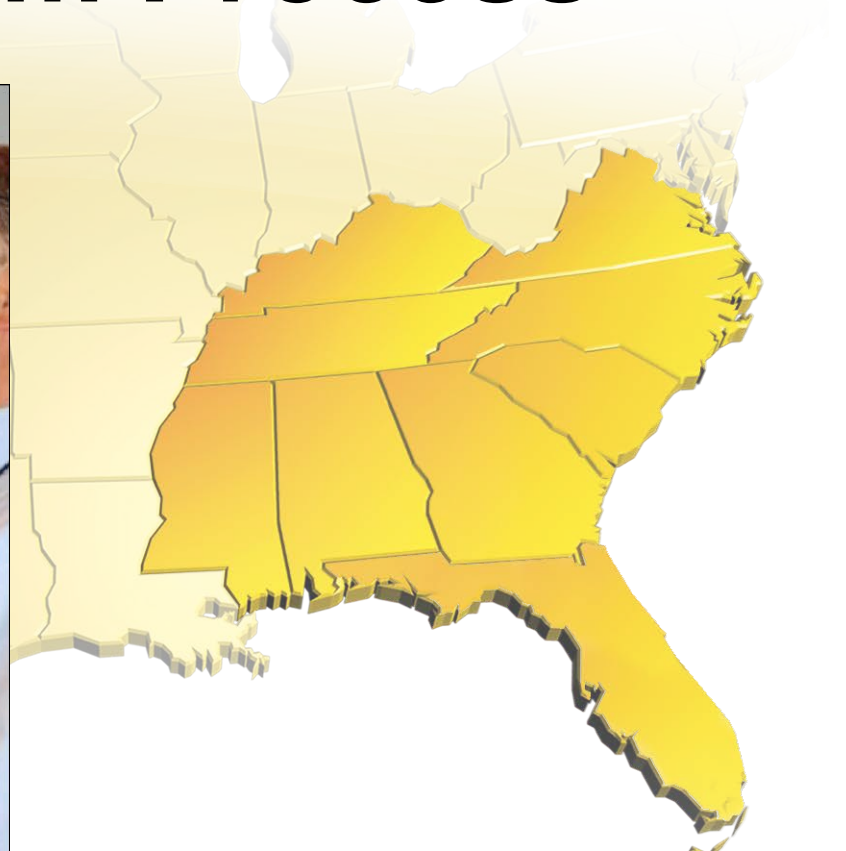


Tourism and Coastal Guide

- REPM Elements
- Situational Awareness
- Decision-Making Process
- Multi-jurisdictional Partnership Planning
- Connection to Network and Network Resources



Transfer Team Process



Doug Bryson, Spartanburg, SC EM

Eddie Hicks, former IAEM President
and retired AL EM



Gulf Coast Team

- Emergency Managers statewide and Gulf Coast
- NWS personnel
- NGOs
- First responders
- Coastal and tourism business leaders
- HAM radio / WQRZ local FM radio station

Ham Radio

- Amateur radio: the use of designated radio frequency spectrum for purposes of private recreation, non-commercial exchange of messages, wireless experimentation, self-training, and emergency communication.

WQRZ

- WQRZ Katrina Radio is local FM radio station.
- A broadcast for responders.
- A communication first responder.
- “Rain, Shine or Katrina.”
- Public service announcements PSAs
- Topics?

Collaborative Opportunities

- REPM applications
 - American Red Cross
 - NWS Integrated Warning Team
 - Warning alerts
 - NWS weather warnings
 - Social media integration
 - Amateur/ham radio stakeholders
 - Case studies



Collaborative Opportunities

- Ongoing collaborations
 - MEMA
 - MCDEMA
 - SCEMA
- Collaboration development
 - Salvation Army
 - MS VOAD
 - Northrop Grumman
 - MDOT
 - MS Utilities
 - Keesler Air Force Base
 - Stennis Space Center
 - Chevron
 - Big Box Stores



Collaborative Partners

- Coastal and Tourism Partners
 - Restaurants
 - Hotels/resorts
 - Retail
 - Local governments
 - Neighborhood associations
 - Real Estate
 - Casinos/entertainment venues



Summary & Conclusions

- New Knowledge
 - Situational awareness tools for economic-based decision making in emergencies.
 - Network decision making tools for transient clientele.
 - REPM Elements for coastal and tourism emergency planning partnerships.
 - Use of multi-jurisdictional partnerships within common industries and corporations.

Summary & Conclusions

- **Planned and Actual Accomplishments**
 - More networks than anticipated
 - Regional planning hub concept
 - American Red Cross reintegration into networks
 - Case studies
 - Weather warning integration
 - Public service announcements education
 - Use of social media

Summary & Conclusions

- Your use of the REPM
- Your goals and objectives for regional emergency planning
- Success!
 - Education
 - Resiliency
- Final Questions and Comments
 - Your examples of REPM





Contact Information

- Dr. Laura Myers, Research Professor
 - Phone: (828) 243-2952
 - Email: Laura.myers@ssrc.msstate.edu
 - Mail: PO Box 5287, MS State, MS 39762
- Ms. Ashley Loftin, Field Coordinator
 - Phone: (662) 436-0323
 - Email: Ashley.loftin@ssrc.msstate.edu