



Disaster Planning & Resilience

- Dr. Laura Myers
 - Regional Emergency Planning Model Project
 - Department of Homeland Security's SERRI Initiative
 - Charlotte, NC
 - Spartanburg, SC
 - Western Piedmont Task Force
 - Anderson, SC
 - Abbeville, SC
 - Oconee, SC
 - Pickens, SC
 - Greenwood, SC



Regional Emergency Planning

- Resiliency
 - The economy
 - Achieving equilibrium after a disaster
- Growing the region
- Strengthening public-private collaborations
- Community-based preparedness
 - Grassroots efforts
 - Boots on the ground
 - Volunteer organizations
 - Faith-based organizations
 - Businesses
 - Schools
 - Citizens





Regional Emergency Planning

- Disparate emergency planning stakeholders
 - Emergency Management
 - Law Enforcement
 - Fire
 - Business
 - Banking Industry
 - Insurance Industry
 - VOADS
 - Utilities





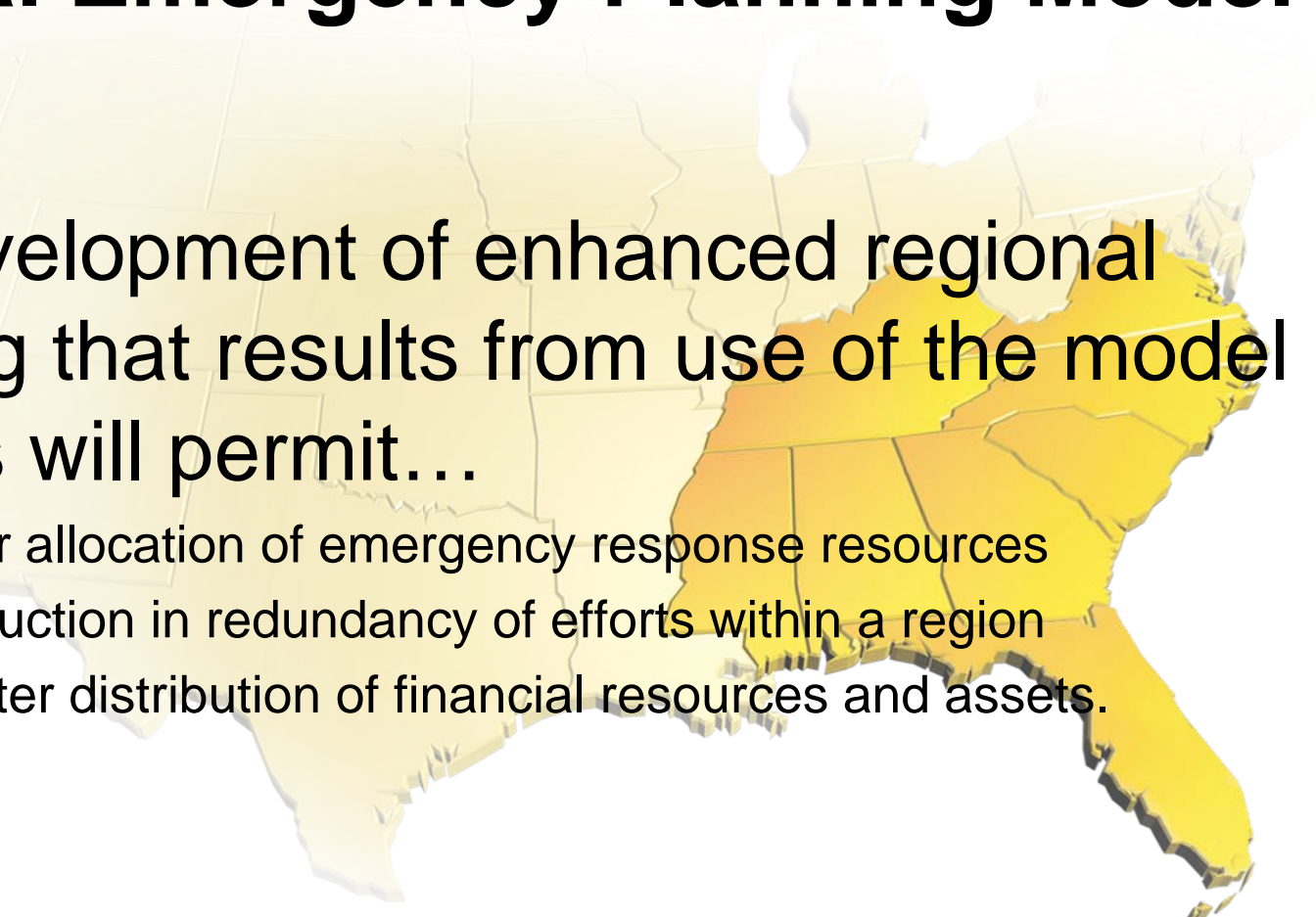
Regional Emergency Planning Model

- Relation of Model's Purpose to Homeland Security Critical Infrastructure Protection:
 - Provide users with an easy to use system on how to enhance regional planning efforts from any level of development.
 - Assist users in...
 - identifying appropriate critical infrastructure partners in the process and doing so at a regional level.
 - identifying critical infrastructure protection needs at a regional level.
 - developing protection plans regional in scope.
 - allocating regional resources to more localized critical infrastructure protection plans.



Regional Emergency Planning Model

- The development of enhanced regional planning that results from use of the model process will permit...
 - better allocation of emergency response resources
 - a reduction in redundancy of efforts within a region
 - a better distribution of financial resources and assets.



Preparedness

- A culture of preparedness
 - Grassroots effort
 - Organization of communities
 - Ensure self-reliance
 - Create continuity of community
 - Develop the region
- Create effective community partnerships
 - ID and leverage collective capabilities of local stakeholders
 - Develop effective cross-sector partnerships



Partnerships

- Trusted, tested relationships
- Common purpose
- How is this done?
- Cannot be mandated.
- Need safe, neutral environment to do this.



Partnerships

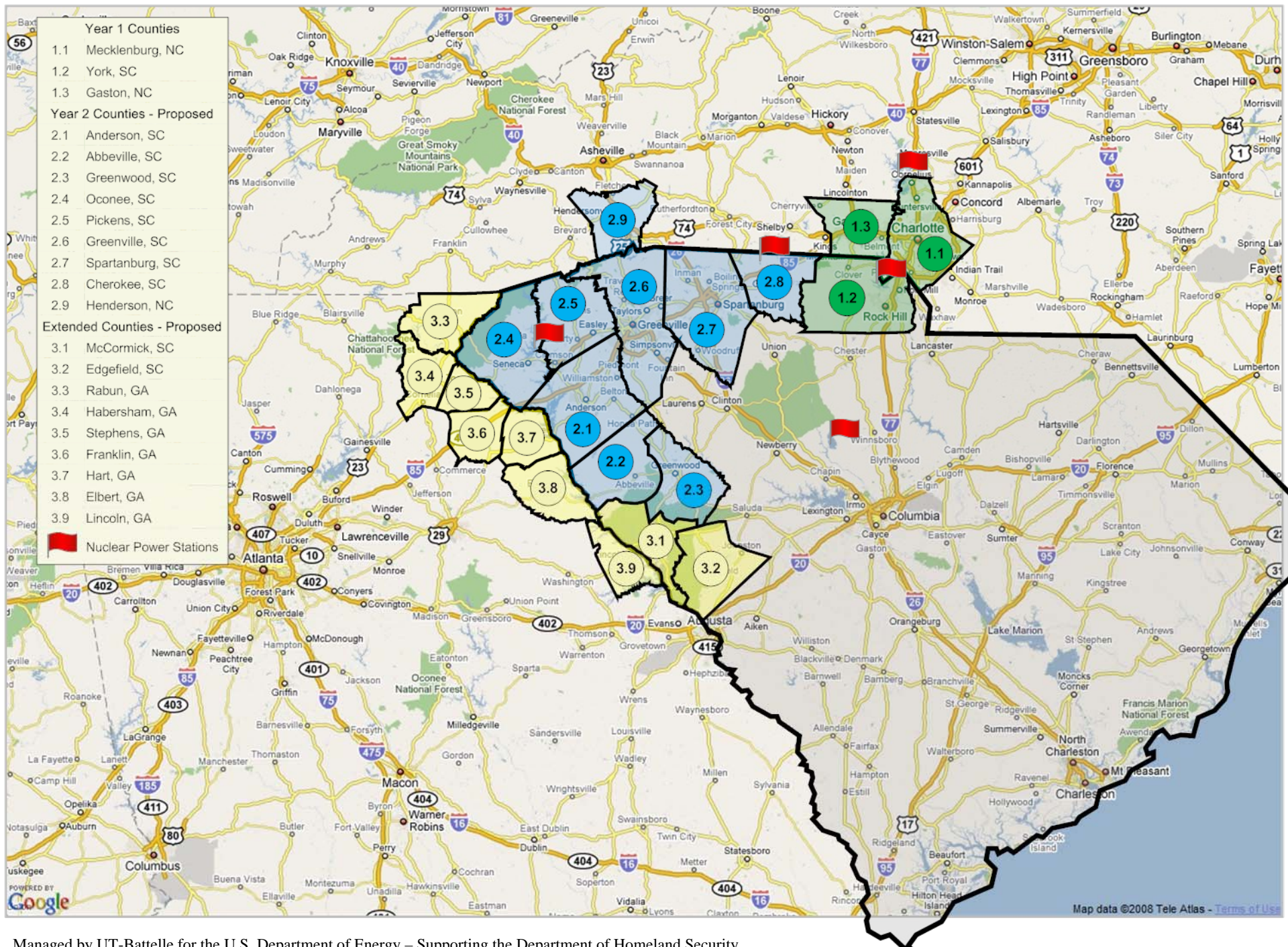
- Partnerships must reflect the needs, priorities, and the economies of the regions they serve.
- How to? All Hazards approach?
- Build consensus, but not force compliance.
- Bringing stakeholders into early stages of risk analysis, disaster planning, preparation, exercising, coordinated mitigation, and response and recovery efforts.

Outcomes

- Educate on the importance of resilient communities.
- Highlight infrastructure interdependencies.
- Increase number and efficacy of partnerships with the goal of resiliency.
- Gather relevant information and best practices.
- Enhance coordinated resource management.
- Create “all-hazards” preparedness and resilience.

Outcomes

- Complement existing industry-specific programs.
- Reduce barriers to partnerships.
- Grow the region.
- Demonstrate the development of regionalization, partnerships, and resiliency.
 - After the disaster
 - Plans
 - Exercises
 - Highlight when possible
 - This Summit

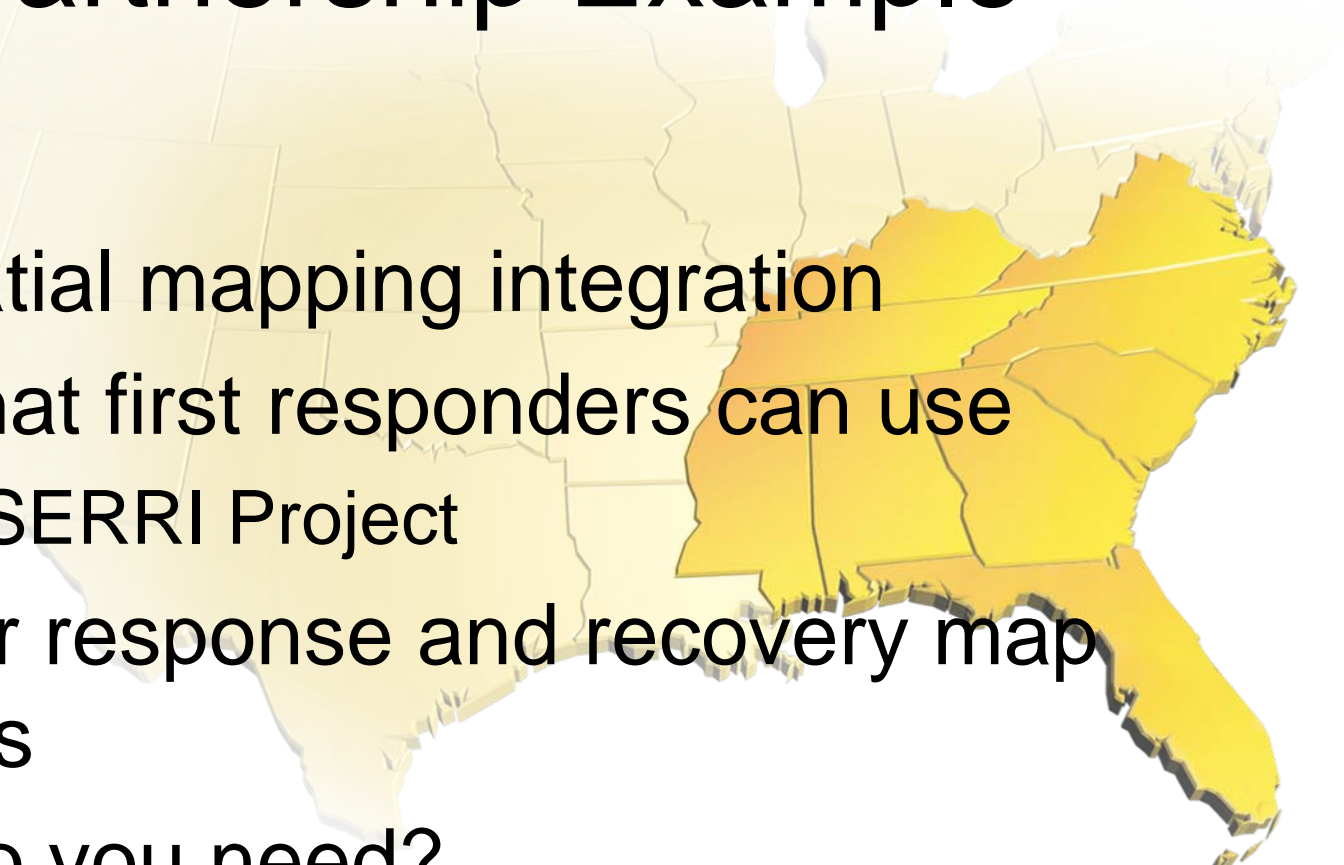


Managed by UT-Battelle for the U.S. Department of Energy – Supporting the Department of Homeland Security



Partnership Example

- Geospatial mapping integration
- Tools that first responders can use
 - MSU SERRI Project
- Disaster response and recovery map products
- What do you need?
 - Survey



Regionalizing

- Leadership-Who, what, where, and when?
- Current status in regard to regionalizing, partnerships, and resilience?
- Defining changes?
- Defining events?
- Barriers that had to be overcome.
- Barriers yet to overcome?

Regionalizing

- Visions and goals
- The Task Force creation
- Disaster Summit
 - Purpose
- The next year and beyond



Conclusion

- Regionalization points
- Resilience points
- Strategies for success
- Connections to other regional teams
- The Regional Emergency Planning Model Process!!!!!!
- Questions and answers

